

**Charlize**

Women's Metal

Colors: Black/Gold,  
Blue

| EYE | DBL | TEMPLE |
|-----|-----|--------|
| 51  | 16  | 135mm  |

Oh my! Wow! Fabulous! Let me see that! Those are just some of the responses when people see the Charlize frame. Capturing the essence of the Wittnauer woman, the Charlize is **fashion forward, glamorous** and **eye-catching** with its **wonderful shape, colors and contrasts**. Try this design on your more “edgy patients” and watch their reaction.

**Heloise**

Women's Zyl

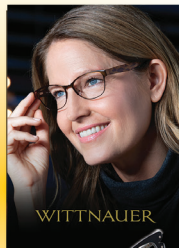
Colors: Black, Teal



| EYE | DBL | TEMPLE |
|-----|-----|--------|
| 52  | 15  | 140mm  |

**Hand made acetate** frames with **laminated brow bars** that continue onto the temples is what you want and expect to see in the high-end optical boutiques that sell for more than \$400. Price the Heloise under \$200 and watch the reactions of your more discerning patients. **Comfort, fit, design,** and the wow factor combined, make the Heloise a winner.

Available  
Point-of-Purchase  
Displays



5" x 7"  
Easel Back  
Counter Card  
Display

