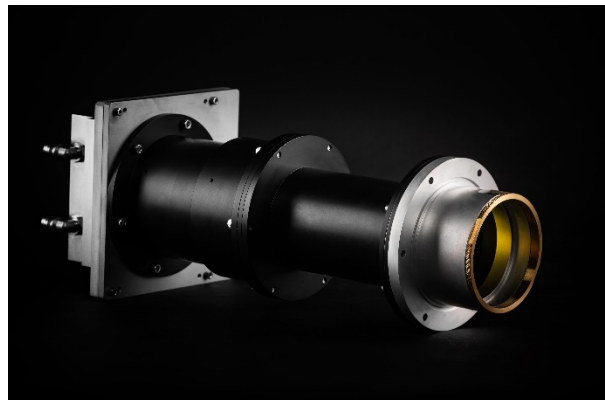


NanoSprint15 Mk-II: High Sensitivity CMOS TEM Camera

Introducing the NanoSprint15 Mk-II:

The NanoSprint15 Mk-II is AMT's latest product featuring an entirely new sensor that achieves the high sensitivity required for materials and life-sciences. Its fine-pixel, low-noise CMOS sensor offers a large 15 megapixel sampling region with a high speed 30fps readout.

AMT coupled the sensor's generous field-of-view and ultra-fine sampling with AMT's high performance optics to create a system that is ideal for a wide range of applications. Users can enjoy both its excellent contrast plus the ability to zoom for images that contain both context and detail.



Adam_pan_003.tif
Cal: 0.783034 nm/pix
08:37 12/19/2019

Camera: NANOSPT15, Exposure: 1200 (ms) x 3 drift frames, Gain: 1, Bin: 1
Gamma: 1.00, No Sharpening, Normal Contrast

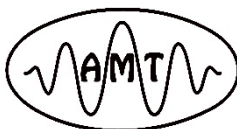
400 nm
HV=200kV
Direct Mag: 11500 x
AMT Camera System

Advanced Microscopy Techniques 242 West Cummings Park, Woburn, MA 01801

Tel: (978)774-5550 Fax: (978)739-4313

Email: info@amtimaging.com URL: <http://www.amtimaging.com>

NanoSprint15 Rev4



NanoSprint 15 Mark II Specifications	
Sensor Size [pixels]	5056 × 2960
Phosphor Pixel Size [μm]	12.75 x 12.75
Active Pickup Region [mm]	65 x 37
Digitization	16 bit
Mounting Position	On-Axis
HT Range [kV]	20–200
Optical Coupling	Custom high performance lens
Lens Magnification	0.34
Lens NA _{image}	0.32
Lens MTF at Nyquist [%]	>70
Framerate for Display Image [fps]	30
Cooling	20C water
Micro Lenses	Yes
Shutter	Rolling
Exposure Time [ms]	1 - 10,000
Power	100-240VAC
Digital Interface	PCIe
Vacuum Compatibility	<10 ⁻⁷ torr
Vacuum Seals	Fixed o-ring
Environment	Electronics and cooling outside of vacuum
X-ray shielding limit	Up to 200kV
Certifications	UL, CE , RoHS
Computer OS	Windows 10 Professional 64 bit

Specifications are subject to change with notification*

Advanced Microscopy Techniques 242 West Cummings Park , Woburn, MA 01801

Tel: (978)774-5550 Fax: (978)739-4313

Email: info@amtimaging.com URL: <http://www.amtimaging.com>



NanoSprint15 Rev4