



SP-1158

3/4" IMPACT WRENCH

Applications:

This compact size, high powered, impact wrench is ideal for any task from spring work to pinion nut and truck pad removal to major engine tear-downs.

Features:

- Single Dog Clutch mechanism delivers up to 1,100 ft-lbs. smoothly.
- Specially designed regulator system allows mechanics to adjust power output in one direction-while maintaining full power in the opposite direction.
- Steel hammer case protects hammer mechanism.
- Handle air exhaust directs air flow away from work and reduces noise level.

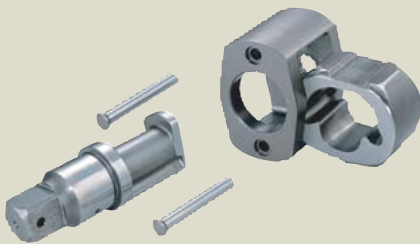
Steel Hammer Case



Reverse Lever with Air Regulator

Handle Air Exhaust

Single Dog Clutch



The single dog clutch hammer mechanism provides 1 blow per revolution. With only three moving parts this impact mechanism is extremely powerful and very durable. Excellent for use in heavy duty industrial applications.

MODEL NO.	SQ.DRIVE [in]	BOLT CAPACITY [in]	WORKING TORQUE RANGE [ft-lbs.]	MAX. TORQUE [ft-lbs.]	FREE SPEED [rpm]	OVERALL LENGTH [in]	Vibration Level [m/s ²]	Sound Pressure Level [dB(A)]	NET WEIGHT [lbs.]	AIR INLET [in-NPT]
SP-1158	3/4	1	200~660	1,100	5,500	8.7	5.62	93.5	12	3/8