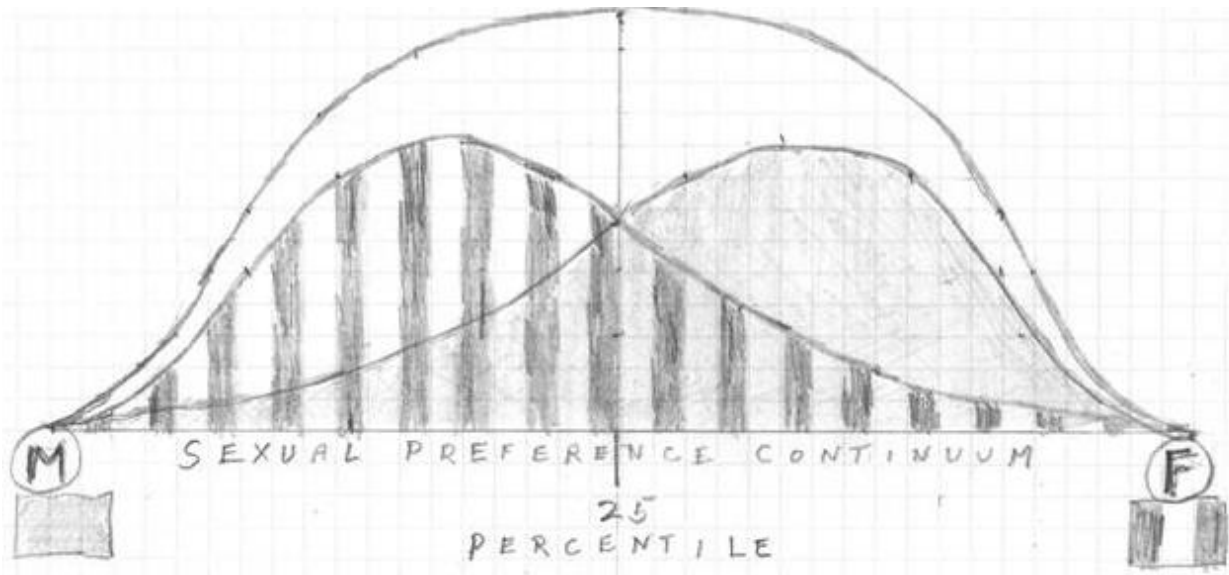


The Beach Sexual Preference Continuum Analysis

This analysis shows that those at the twenty-five percentile are innately bisexual. Those below the twenty-five percentile are ever more innately homosexual and those above the twenty-five percentile are ever more innately heterosexual.



This shows the incidence of male sexual preference highly skewed to a preference for females while the incidence of female sexual preference is highly skewed to a preference for males. Most will recognize the Bell Curve.

From this perspective, one could postulate that societal influence in the past have caused many who were innately more homosexual to live a heterosexual lifestyle or to deny or hide their homosexual proclivities. Similarly, many who were slightly more innately heterosexual were dissuaded from engaging in homosexual pursuits. The social stigma ascribed to homosexuals has likely been the cause for some with those proclivities to react with homophobic behavior.

With the removal of societal taboos of homosexual lifestyles, it could be anticipated that these influence on either side of the twenty-five percentile will be reversed. Instead of those admitting to homosexuality being repressed well below the twenty-five percentile; they will migrate noticeably above that line.

Hopefully, this approach to the issue of sexual preference will produce a wider understanding among all who are interested in this matter and that the extremes will be able to engage each other with greater empathy and less rancor. For those who recognize that Humanity has value,(see Perceptionism.com) family structures that enable the required procreation and the effective rearing of children while still be compatible with this analysis must be created.

Richard A. Beach.

© 2014 (all rights reserved)